



16,000 BHP / 207 TBP / DP2 / AHTS Call Sign: 9V8177

Principal Particulars:

Flag	: Singapore
Year Built	: 2010
Place Built	: Yuexin Shipbuilding Co. Ltd., China
Length Overall	: 74.50 m
Length B.P.	: 64.80 m
Beam Overall	: 17.20 m
Depth Moulded	: 8.00 m
Max Draught	: 7.20 m
Design Draft	: 5.50 m
IMO No.	: 9451654
Official No.	: 395418

Classification:

ABS +A1, Towing Vessel, AH, Fire Fighting Vessel Class 1, Ice Class D0, Offshore Support Vessel, (E), +AMS, +ACCU, +DPS-2

Capacities:

Gross Tonnage	: 2,736 tons
Net Tonnage	: 821 tons
Deadweight	: 2,764T @6.79m draft
Fuel Tank	: 1,150 m ³
Potable Water	: 725 m ³
Drill Water	: 1,100 m ³
Mud / Brine Tank	: 515 m ³
Deck Cargo Area	: 520m ²
Deck Cargo	: 1,000 tons
Cargo Deck Load	: 10T/ m ²

Speed/Fuel:

Max Speed	: approx. 16.76 kts / 55 tonnes / 24 hrs
Economic Speed	: approx. 9.5 kts / 22 tonnes / 24 hrs
AH operations	: approx. 35 tonnes / 24 hrs
Towing 75%/150t Pull	: approx. 42 tonnes / 24 hrs
Harbour Mode	: approx. 1.6 – 2 tonnes / 24 hrs
Quality of Fuel	: MGO

Discharging Rates:

Drill Water/Pump	: 1 x 150 m ³ /hr@90m head
Fresh Water/Pump	: 2 x 150 m ³ /hr@90m head
Fuel/Pump	: 2 x 150 m ³ /hr@90m head
Brine/Pump	: 1 x 75 m ³ /hr@90m head
Liquid mud/Pump	: 2 x 75 m ³ /hr@90m head
Flow Meter	: 2 for FO
Flow Meter	: 2 for FW

Bulk Plant:

220 m³ (59.66m³ x 2, 50.34m³ x 2) in 4 tanks
Working pressure 82psi/5.6 bar, 25m³/min, 2 x screw compressors

Accommodation:

Officer/Crew	18
Berth Total	42
Cabins Total	18
Hospital	1
Air conditional throughout	

Machinery & Equipment:

Main Engines	: MAN 2 x 8000BHP
Generators	: 2 x 550kW diesel generators @3x440V 60Hz : 1 x 99kW emergency diesel generator : 2 x Shaft generator @ 2000ekw each
Propellers	: 2 x CP propellers in fixed nozzles
Bow Thruster	: 1 x Tunnel thruster 880kW = 1,180BHP = approx. 15T : 1 x Azimuth thruster 880kW = 1,180BHP = approx. 15T
Stern Thruster	: 1 x Tunnel thruster 880kW = 1,180BHP = approx. 15T
Deck Crane	: 1 x Prov.crane (on Starboard side) SWL 3.5 tons@12m radius : 1 x Moveable crane – electro hydro.travelling knuckle crane : On Port side cargo rail, lifting capacity SWL 4.5 tons@13m radius
Reefer Points	: 2x440v, 2x220v

Tow/Anchor-handling Equipment:

Tow/AH Winch	: 1 x Oilstates double drum waterfall, low pressure : Stall line pull of 402 tons : Brake holding capacity @680tons@1 st layer of rope on the drum
Towing Wire Drum	: 5,200m x 77mm dia wire capacity
AH Drum Wire	: 5,200m x 77mm dia wire capacity
1 x Sec Winch	: 1 fixed drum with 2 dividing flanges with cut out dimension : B:1219mm, F:3499mm, L1:3696mm, L2:914mm
1 x Storage Reel	: 1500mm x 77mm (spare tow wire)
Tugger Winch	: 2 x 15 tons nominal pull
Shark Jaw	: 2 x Triplex H-500 SWL 500 tons
Tow Pin	: 2 x Triplex H-200 SWL 600 tons (horizontal) 200 tons (vertical)
Capstan	: 2 x 10T each
Stern Roller	: 1 x 500 tons SWL, 6m x 3m dia
Grapple & J-Hook	: 150 tons
Wildcats/Gypsies	: 2x76mm(install) + 2x84mm spare
Rudders	: 2 x independent high lift flat type, LxH=2000mmx4000mm
Rig Chain Lockers	: 4 x 94m ³ = 376 m ³

Towing / AH Wires:

Main Tow Wire	: 1,500m x 77mm dia
AH Wire	: 1,500m x 77mm dia
Spare Wire	: 1,500m x 77mm dia

Mooring Equipment:

Windlass	: 7.8T @ 12m/min for chain cables
Anchors	: 2 x SPEK Type Anchor 2,692kg
Cables	: 467.5m x 38mm dia

DP/Joystick Control:

Converteam ADP-2 system

FiFi 1 System/Oil Pollution Control:

Pump Capacity	: 2x1,650m ³ /hr @140m head, Class FiFi 1
Monitor	: 2x1,200m ³ /hr

Navigation & Communication Equipment:

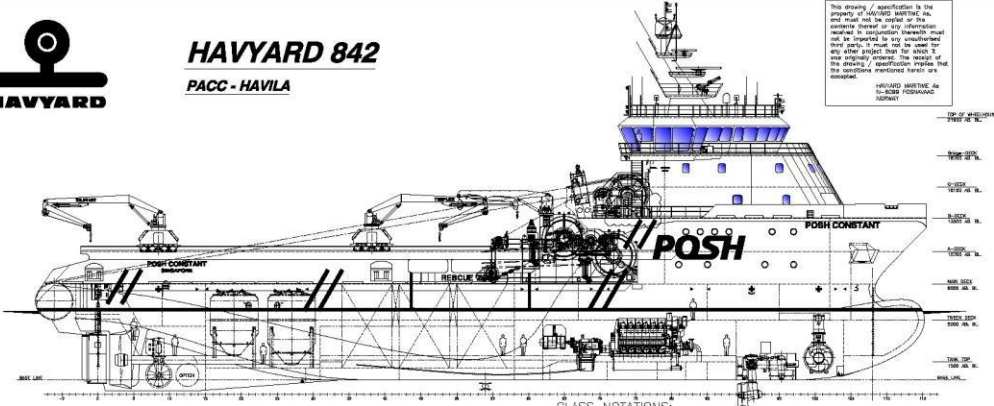
MF/HF, Watchreceiver, VHF fixed, VHF portable, Inmarsat C, Navtex, Autopilot, Radar ARPA, Surfplotting, DGPS, Gyro, Echo Sounder, AIS Transponder, Fleet 77, VDR etc.



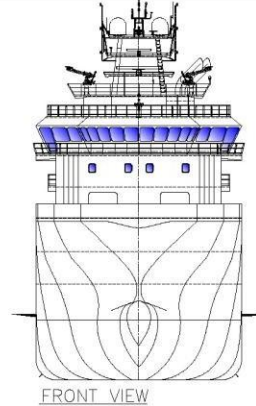
HAVYARD 842

PACC - HAVILA

This drawing / specification is the property of Havyard Maritime AS and shall not be copied or the contents thereof or information contained in it, in whole or in part, without the prior written consent of Havyard Maritime AS. The design / specification implies that the equipment mentioned herein are



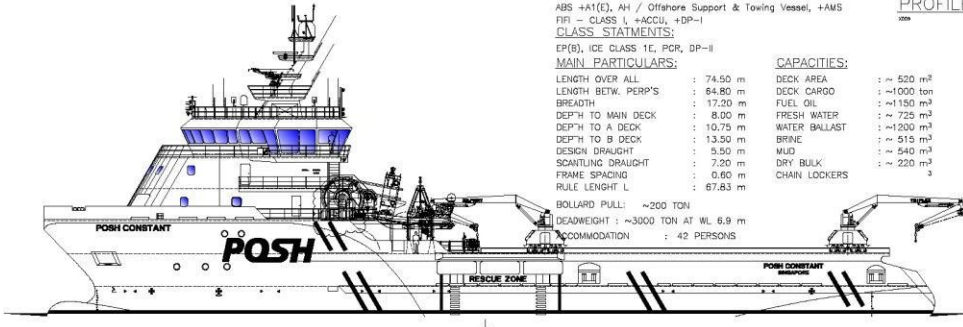
PROFILE



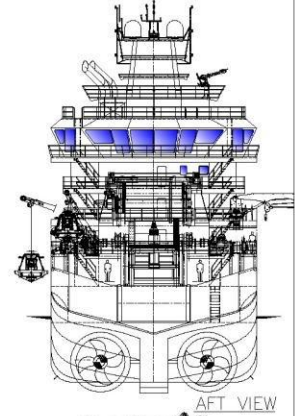
FRONT VIEW

CLASS NOTATIONS:
 ABS +A1(E), AH / Offshore Support & Towing Vessel, +AMS
 FRI - CLASS I +ACCU, +DP-1
CLASS STATEMENTS:
 EP(8), ICE CLASS 1E, PCR, DP-1
MAIN PARTICULARS:
 LENGTH OVER ALL : 74.50 m
 LENGTH BETW. PERP'S : 64.80 m
 BREADTH : 17.20 m
 DEPTH TO MAIN DECK : 8.00 m
 DEPTH TO A DECK : 10.75 m
 DEPTH TO B DECK : 13.50 m
 DESIGN DRAUGHT : 5.50 m
 SCANTLING DRAUGHT : 7.20 m
 FRAME SPACING : 0.60 m
 RULE LENGTH L : 67.83 m
 BOLLARD PULL : ~200 TON
 DEADWEIGHT : ~3000 TON AT WL 6.9 m
 ACCOMMODATION : 42 PERSONS

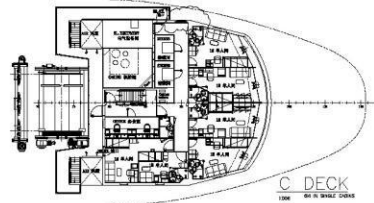
CAPACITIES:
 DECK AREA : ~ 520 m²
 DECK CARGO : ~ 1000 ton
 FUEL OIL : ~ 1150 m³
 FRESH WATER : ~ 725 m³
 WATER BALLAST : ~ 1200 m³
 BRINE : ~ 515 m³
 MUD : ~ 540 m³
 DRY BULK : ~ 220 m³
 CHAIN LOCKERS : 3



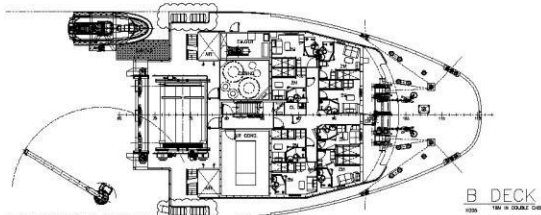
PROFILE PORT



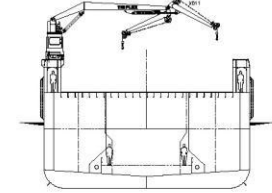
AFT VIEW



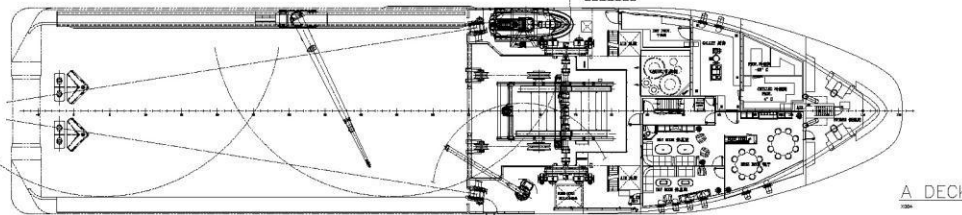
C DECK



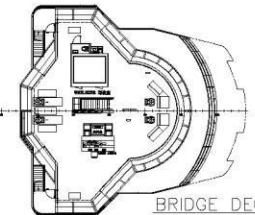
B DECK



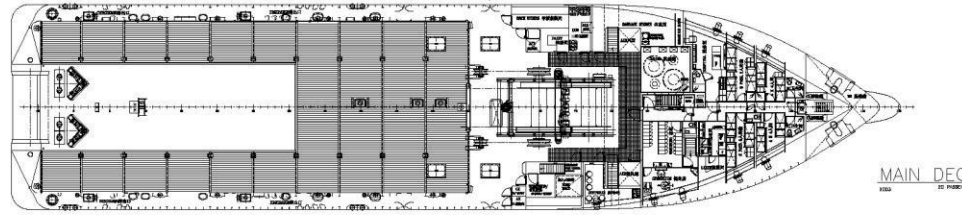
MIDSHIP SECTION



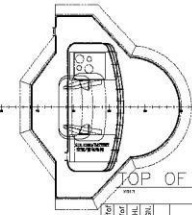
A DECK



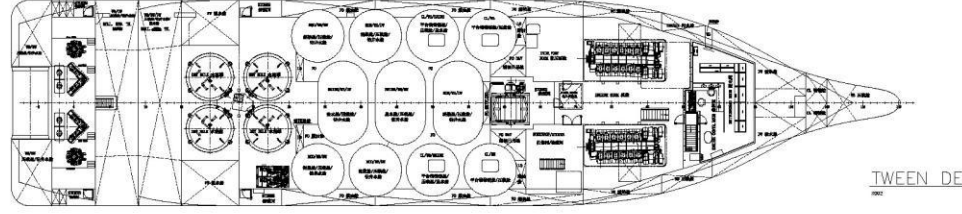
BRIDGE DECK



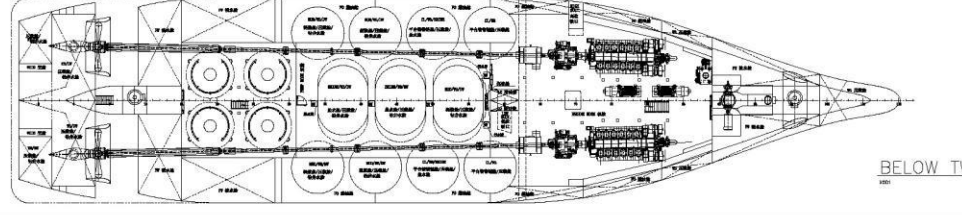
MAIN DECK



TOP OF WHEELHOUSE



TWEEN DECK



BELOW TWEEN DECK

DATE	21.04.09	REV.	F	DESCRIPTION	UPDATES BOTH DECKS
DATE	03.08.09	REV.	G	DESCRIPTION	REVISIONS
DATE	03.08.09	REV.	H	DESCRIPTION	REVISIONS
DATE	03.08.09	REV.	I	DESCRIPTION	REVISIONS
DATE	03.08.09	REV.	J	DESCRIPTION	REVISIONS
DATE	03.08.09	REV.	K	DESCRIPTION	REVISIONS
DATE	03.08.09	REV.	L	DESCRIPTION	REVISIONS
DATE	03.08.09	REV.	M	DESCRIPTION	REVISIONS
DATE	03.08.09	REV.	N	DESCRIPTION	REVISIONS
DATE	03.08.09	REV.	O	DESCRIPTION	REVISIONS
DATE	03.08.09	REV.	P	DESCRIPTION	REVISIONS
DATE	03.08.09	REV.	Q	DESCRIPTION	REVISIONS
DATE	03.08.09	REV.	R	DESCRIPTION	REVISIONS
DATE	03.08.09	REV.	S	DESCRIPTION	REVISIONS
DATE	03.08.09	REV.	T	DESCRIPTION	REVISIONS
DATE	03.08.09	REV.	U	DESCRIPTION	REVISIONS
DATE	03.08.09	REV.	V	DESCRIPTION	REVISIONS
DATE	03.08.09	REV.	W	DESCRIPTION	REVISIONS
DATE	03.08.09	REV.	X	DESCRIPTION	REVISIONS
DATE	03.08.09	REV.	Y	DESCRIPTION	REVISIONS
DATE	03.08.09	REV.	Z	DESCRIPTION	REVISIONS
DATE	03.08.09	REV.	AA	DESCRIPTION	REVISIONS
DATE	03.08.09	REV.	AB	DESCRIPTION	REVISIONS
DATE	03.08.09	REV.	AC	DESCRIPTION	REVISIONS
DATE	03.08.09	REV.	AD	DESCRIPTION	REVISIONS
DATE	03.08.09	REV.	AE	DESCRIPTION	REVISIONS
DATE	03.08.09	REV.	AF	DESCRIPTION	REVISIONS
DATE	03.08.09	REV.	AG	DESCRIPTION	REVISIONS
DATE	03.08.09	REV.	AH	DESCRIPTION	REVISIONS
DATE	03.08.09	REV.	AI	DESCRIPTION	REVISIONS
DATE	03.08.09	REV.	AJ	DESCRIPTION	REVISIONS
DATE	03.08.09	REV.	AK	DESCRIPTION	REVISIONS
DATE	03.08.09	REV.	AL	DESCRIPTION	REVISIONS
DATE	03.08.09	REV.	AM	DESCRIPTION	REVISIONS
DATE	03.08.09	REV.	AN	DESCRIPTION	REVISIONS
DATE	03.08.09	REV.	AO	DESCRIPTION	REVISIONS
DATE	03.08.09	REV.	AP	DESCRIPTION	REVISIONS
DATE	03.08.09	REV.	AQ	DESCRIPTION	REVISIONS
DATE	03.08.09	REV.	AR	DESCRIPTION	REVISIONS
DATE	03.08.09	REV.	AS	DESCRIPTION	REVISIONS
DATE	03.08.09	REV.	AT	DESCRIPTION	REVISIONS
DATE	03.08.09	REV.	AU	DESCRIPTION	REVISIONS
DATE	03.08.09	REV.	AV	DESCRIPTION	REVISIONS
DATE	03.08.09	REV.	AW	DESCRIPTION	REVISIONS
DATE	03.08.09	REV.	AX	DESCRIPTION	REVISIONS
DATE	03.08.09	REV.	AY	DESCRIPTION	REVISIONS
DATE	03.08.09	REV.	AZ	DESCRIPTION	REVISIONS
DATE	03.08.09	REV.	BA	DESCRIPTION	REVISIONS
DATE	03.08.09	REV.	BB	DESCRIPTION	REVISIONS
DATE	03.08.09	REV.	BC	DESCRIPTION	REVISIONS
DATE	03.08.09	REV.	BD	DESCRIPTION	REVISIONS
DATE	03.08.09	REV.	BE	DESCRIPTION	REVISIONS
DATE	03.08.09	REV.	BF	DESCRIPTION	REVISIONS
DATE	03.08.09	REV.	BG	DESCRIPTION	REVISIONS
DATE	03.08.09	REV.	BH	DESCRIPTION	REVISIONS
DATE	03.08.09	REV.	BI	DESCRIPTION	REVISIONS
DATE	03.08.09	REV.	BJ	DESCRIPTION	REVISIONS
DATE	03.08.09	REV.	BK	DESCRIPTION	REVISIONS
DATE	03.08.09	REV.	BL	DESCRIPTION	REVISIONS
DATE	03.08.09	REV.	BM	DESCRIPTION	REVISIONS
DATE	03.08.09	REV.	BN	DESCRIPTION	REVISIONS
DATE	03.08.09	REV.	BO	DESCRIPTION	REVISIONS
DATE	03.08.09	REV.	BP	DESCRIPTION	REVISIONS
DATE	03.08.09	REV.	BQ	DESCRIPTION	REVISIONS
DATE	03.08.09	REV.	BR	DESCRIPTION	REVISIONS
DATE	03.08.09	REV.	BS	DESCRIPTION	REVISIONS
DATE	03.08.09	REV.	BT	DESCRIPTION	REVISIONS
DATE	03.08.09	REV.	BU	DESCRIPTION	REVISIONS
DATE	03.08.09	REV.	BV	DESCRIPTION	REVISIONS
DATE	03.08.09	REV.	BW	DESCRIPTION	REVISIONS
DATE	03.08.09	REV.	BX	DESCRIPTION	REVISIONS
DATE	03.08.09	REV.	BY	DESCRIPTION	REVISIONS
DATE	03.08.09	REV.	BZ	DESCRIPTION	REVISIONS
DATE	03.08.09	REV.	CA	DESCRIPTION	REVISIONS
DATE	03.08.09	REV.	CB	DESCRIPTION	REVISIONS
DATE	03.08.09	REV.	CC	DESCRIPTION	REVISIONS
DATE	03.08.09	REV.	CD	DESCRIPTION	REVISIONS
DATE	03.08.09	REV.	CE	DESCRIPTION	REVISIONS
DATE	03.08.09	REV.	CF	DESCRIPTION	REVISIONS
DATE	03.08.09	REV.	CG	DESCRIPTION	REVISIONS
DATE	03.08.09	REV.	CH	DESCRIPTION	REVISIONS
DATE	03.08.09	REV.	CI	DESCRIPTION	REVISIONS
DATE	03.08.09	REV.	CJ	DESCRIPTION	REVISIONS
DATE	03.08.09	REV.	CK	DESCRIPTION	REVISIONS
DATE	03.08.09	REV.	CL	DESCRIPTION	REVISIONS
DATE	03.08.09	REV.	CM	DESCRIPTION	REVISIONS
DATE	03.08.09	REV.	CN	DESCRIPTION	REVISIONS
DATE	03.08.09	REV.	CO	DESCRIPTION	REVISIONS
DATE	03.08.09	REV.	CP	DESCRIPTION	REVISIONS
DATE	03.08.09	REV.	CQ	DESCRIPTION	REVISIONS
DATE	03.08.09	REV.	CR	DESCRIPTION	REVISIONS
DATE	03.08.09	REV.	CS	DESCRIPTION	REVISIONS
DATE	03.08.09	REV.	CT	DESCRIPTION	REVISIONS
DATE	03.08.09	REV.	CU	DESCRIPTION	REVISIONS
DATE	03.08.09	REV.	CV	DESCRIPTION	REVISIONS
DATE	03.08.09	REV.	CW	DESCRIPTION	REVISIONS
DATE	03.08.09	REV.	CX	DESCRIPTION	REVISIONS
DATE	03.08.09	REV.	CY	DESCRIPTION	REVISIONS
DATE	03.08.09	REV.	CZ	DESCRIPTION	REVISIONS
DATE	03.08.09	REV.	DA	DESCRIPTION	REVISIONS
DATE	03.08.09	REV.	DB	DESCRIPTION	REVISIONS
DATE	03.08.09	REV.	DC	DESCRIPTION	REVISIONS
DATE	03.08.09	REV.	DD	DESCRIPTION	REVISIONS
DATE	03.08.09	REV.	DE	DESCRIPTION	REVISIONS
DATE	03.08.09	REV.	DF	DESCRIPTION	REVISIONS
DATE	03.08.09	REV.	DG	DESCRIPTION	REVISIONS
DATE	03.08.09	REV.	DH	DESCRIPTION	REVISIONS
DATE	03.08.09	REV.	DI	DESCRIPTION	REVISIONS
DATE	03.08.09	REV.	DJ	DESCRIPTION	REVISIONS
DATE	03.08.09	REV.	DK	DESCRIPTION	REVISIONS
DATE	03.08.09	REV.	DL	DESCRIPTION	REVISIONS
DATE	03.08.09	REV.	DM	DESCRIPTION	REVISIONS
DATE	03.08.09	REV.	DN	DESCRIPTION	REVISIONS
DATE	03.08.09	REV.	DO	DESCRIPTION	REVISIONS
DATE	03.08.09	REV.	DP	DESCRIPTION	REVISIONS
DATE	03.08.09	REV.	DQ	DESCRIPTION	REVISIONS
DATE	03.08.09	REV.	DR	DESCRIPTION	REVISIONS
DATE	03.08.09	REV.	DS	DESCRIPTION	REVISIONS
DATE	03.08.09	REV.	DT	DESCRIPTION	REVISIONS
DATE	03.08.09	REV.	DU	DESCRIPTION	REVISIONS
DATE	03.08.09	REV.	DV	DESCRIPTION	REVISIONS
DATE	03.08.09	REV.	DW	DESCRIPTION	REVISIONS
DATE	03.08.09	REV.	DX	DESCRIPTION	REVISIONS
DATE	03.08.09	REV.	DY	DESCRIPTION	REVISIONS
DATE	03.08.09	REV.	DZ	DESCRIPTION	REVISIONS
DATE	03.08.09	REV.	EA	DESCRIPTION	REVISIONS
DATE	03.08.09	REV.	EB	DESCRIPTION	REVISIONS
DATE	03.08.09	REV.	EC	DESCRIPTION	REVISIONS
DATE	03.08.09	REV.	ED	DESCRIPTION	REVISIONS
DATE	03.08.09	REV.	EE	DESCRIPTION	REVISIONS
DATE	03.08.09	REV.	EF	DESCRIPTION	REVISIONS
DATE	03.08.09	REV.	EG	DESCRIPTION	REVISIONS
DATE	03.08.09	REV.	EH	DESCRIPTION	REVISIONS
DATE	03.08.09	REV.	EI	DESCRIPTION	REVISIONS
DATE	03.08.09	REV.	EJ	DESCRIPTION	REVISIONS
DATE	03.08.09	REV.	EK	DESCRIPTION	REVISIONS
DATE	03.08.09	REV.	EL	DESCRIPTION	REVISIONS
DATE	03.08.09	REV.	EM	DESCRIPTION	REVISIONS
DATE	03.08.09	REV.	EN	DESCRIPTION	REVISIONS
DATE	03.08.09	REV.	EO	DESCRIPTION	REVISIONS
DATE	03.08.09	REV.	EP	DESCRIPTION	REVISIONS
DATE	03.08.09	REV.	EQ	DESCRIPTION	REVISIONS
DATE	03.08.09	REV.	ER	DESCRIPTION	REVISIONS
DATE	03.08.09	REV.	ES	DESCRIPTION	REVISIONS
DATE	03.08.09	REV.	ET	DESCRIPTION	REVISIONS
DATE	03.08.09	REV.	EU	DESCRIPTION	REVISIONS
DATE	03.08.09	REV.	EV	DESCRIPTION	REVISIONS
DATE	03.08.09	REV.	EW	DESCRIPTION	REVISIONS
DATE	03.08.09	REV.	EX	DESCRIPTION	REVISIONS
DATE	03.08.09	REV.	EY	DESCRIPTION	REVISIONS
DATE	03.08.09	REV.	EZ	DESCRIPTION	REVISIONS
DATE	03.08.09	REV.	FA	DESCRIPTION	REVISIONS
DATE	03.08.09	REV.	FB	DESCRIPTION	REVISIONS
DATE	03.08.09	REV.	FC	DESCRIPTION	REVISIONS
DATE	03.08.09	REV.	FD	DESCRIPTION	REVISIONS
DATE	03.08.09	REV.	FE	DESCRIPTION	REVISIONS
DATE	03.08.09	REV.	FF	DESCRIPTION	REVISIONS
DATE	03.08.09	REV.	FG	DESCRIPTION	REVISIONS
DATE	03.08.09	REV.	FH	DESCRIPTION	REVISIONS
DATE	03.08.09	REV.	FI	DESCRIPTION	REVISIONS
DATE	03.08.09	REV.	FJ	DESCRIPTION	REVISIONS
DATE	03.08.09	REV.	FK	DESCRIPTION	REVISIONS
DATE	03.08.09	REV.	FL	DESCRIPTION	REVISIONS
DATE	03.08.09	REV.	FM	DESCRIPTION	REVISIONS
DATE	03.08.09	REV.	FN	DESCRIPTION	REVISIONS
DATE	03.08.09	REV.	FO	DESCRIPTION	REVISIONS
DATE	03.08.09	REV.	FP	DESCRIPTION	REVISIONS
DATE	03.08.09	REV.	FQ	DESCRIPTION	REVISIONS
DATE	03.08.09	REV.	FR	DESCRIPTION	REVISIONS
DATE	03.08.09	REV.	FS	DESCRIPTION	REVISIONS
DATE	03.08.09	REV.	FT	DESCRIPTION	REVISIONS
DATE	03.08.09	REV.	FU	DESCRIPTION	REVISIONS
DATE	03.08.09	REV.	FV	DESCRIPTION	REVISIONS
DATE	03.08.09	REV.	FW	DESCRIPTION	REVISIONS
DATE	03.08.09	REV.	FX	DESCRIPTION	REVISIONS
DATE	03.08.09	REV.	FY	DESCRIPTION	REVISIONS
DATE	03.08.09	REV.	FZ	DESCRIPTION	REVISIONS
DATE	03.08.09	REV.	GA	DESCRIPTION	REVISIONS
DATE	03.08.09	REV.	GB	DESCRIPTION	REVISIONS
DATE	03.08.09	REV.	GC	DESCRIPTION	REVISIONS